

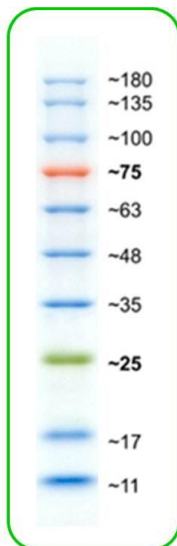
# ACTGene™ Prestained Protein Marker

*Innovative Protein Electrophoresis Workflow Essentials*

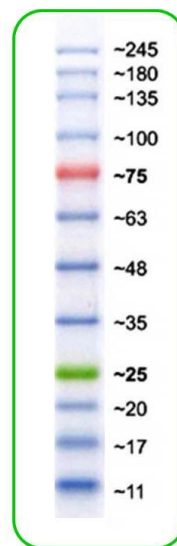
## Prestained Protein Markers

### 3 color 10 & 12 protein choices

- 245KD & 180KD Marker Choices
- 3 Color for Easy Viewing
- 12 & 10 Protein Bands
- Ready to use format ideal for SDS-PAGE, Western Blotting, and related protein applications.



Tris-Glycine 4-20%  
(10-180kD) 10 Protein 3 Color



Tris-Glycine 4-20%  
(10-245kD) 12 Protein 3 Color

### Order Information

- |             |                                                                                                         |
|-------------|---------------------------------------------------------------------------------------------------------|
| ACT-IDMW24  | ACTGene™ Prestained Protein Marker, 12 protein 3 colors (10-245kDa), 500 ul (sufficient for ~150 loads) |
| ACT-IIDMW26 | ACTGene™ Prestained Protein Marker, 10 protein 3 colors (10-180kDa), 500 ul (sufficient for ~150 loads) |

**ACTGene Inc.**

Tel: (973) 978-7888 | Fax: (732) 469-0333  
E-mail: sales@actgene.com