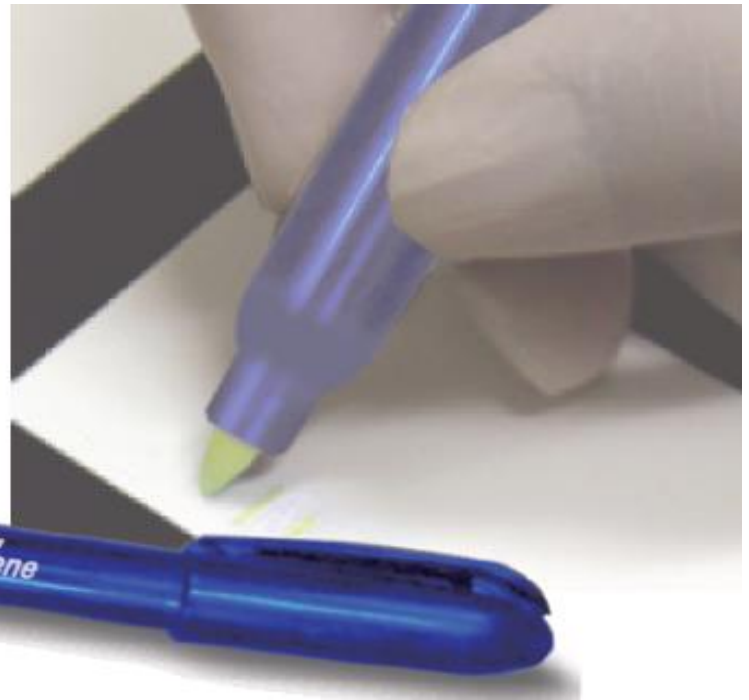
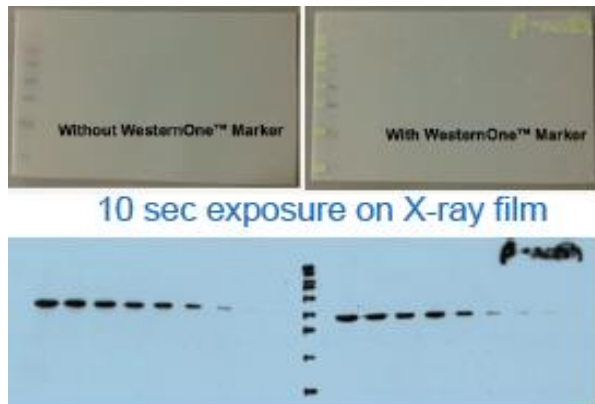


# WesternOne™ Marker Pen

*Innovative Protein Electrophoresis Workflow Essentials*

## Happier Western Blotting – NO MORE GUESSING



- Simplify Western & Improve Accuracy – mark freely for ladder position and transform visible ladder into chemiluminescent bands from membrane to film
- Annotate – permanently mark your blots with date or experiment condition
- Fast & Ultra sensitivity - reacting in just 10 seconds
- Confirm HRP substrate stability – WesternOne™ Marker contains reagent glows when incubate with HRP substrate
- Compatible with X-ray film and CCD imagers

### **ACTGene Inc.**

P.O. Box 7011  
Piscataway, NJ 08855 USA  
Tel: (973) 978-6688  
E-mail:sales@actgene.com

#### Order Information

ACT-WP

WesternOne™ Marker Pen, HRP Marker for Western blot chemiluminescent detection