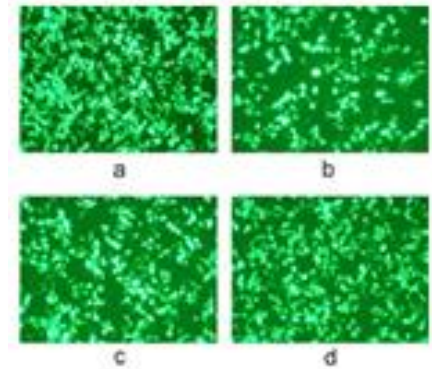


- ➔ High transfection efficiency
- ➔ Low cytotoxicity
- ➔ Simple <30 min protocol
- ➔ Compatibility for most cell lines

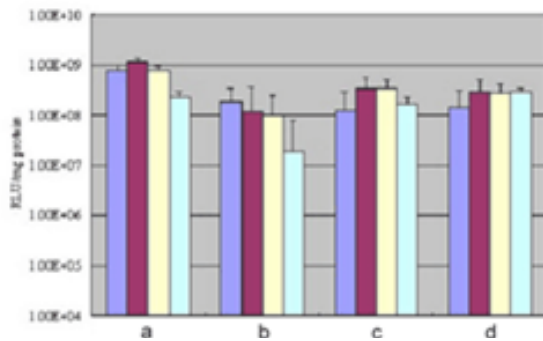


### More transfected cells:

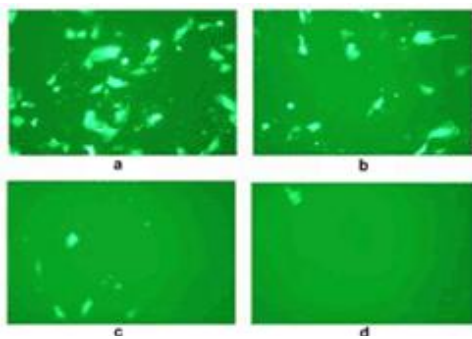


HEK 293 cells transfected with pEGFPN1 and shown 48 hrs post transfection (100x magnification). Panel (a): Convoy™ Transfection Reagent; Panel (b): Competitor A transfection reagent; Panel (c): Competitor B transfection reagent; Panel (d): Competitor C transfection reagent.

### High transfection efficiency:

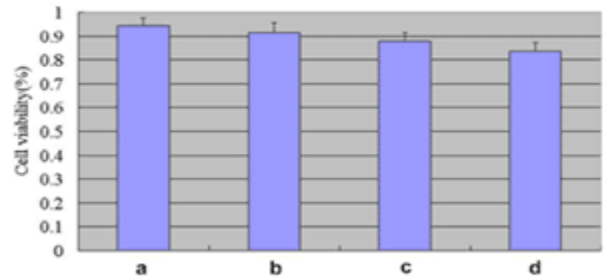


The pCMV-luc plasmid was transfected into HEK 293 cells and then assayed for luciferase activity 48 hours post-transfection. Panel (a): Convoy™ Transfection Reagent; Panel (b): Competitor A transfection reagent; Panel (c): competitor B transfection reagent; Panel (d): Competitor C transfection reagent.



Difficult HUVEC cells transfection (100x magnification). Panel (a): Convoy™ Transfection Reagent; Panel (b): Competitor A transfection reagent; Panel (c): Competitor B transfection reagent; Panel (d): Competitor C transfection reagent.

### Low cytotoxicity:



The viability of HEK 293 cells was assessed using MTT method 48 hrs post transfection. Each transfection reagent was used under optimal conditions. Panel (a): Convoy™ Transfection Reagent; Panel (b): Competitor A transfection reagent; Panel (c): Competitor B transfection reagent; Panel (d): Competitor C transfection reagent.

### Order Information:

- 11103 Convoy™ Transfection Reagent, 0.25ml
- 11105 Convoy™ Transfection Reagent, 0.5ml
- 11110 Convoy™ Transfection Reagent, 1ml
- 11120 Convoy™ Transfection Reagent, 2x1ml
- 11140 Convoy™ Transfection Reagent, 4x1ml
- R1083 G418 (related product)

**ACTGene, Inc.**

P.O. Box 7011

Piscataway, NJ 08855

Tel: (973) 978-7888 | Fax: (732) 469-0333

E-mail: sales@actgene.com